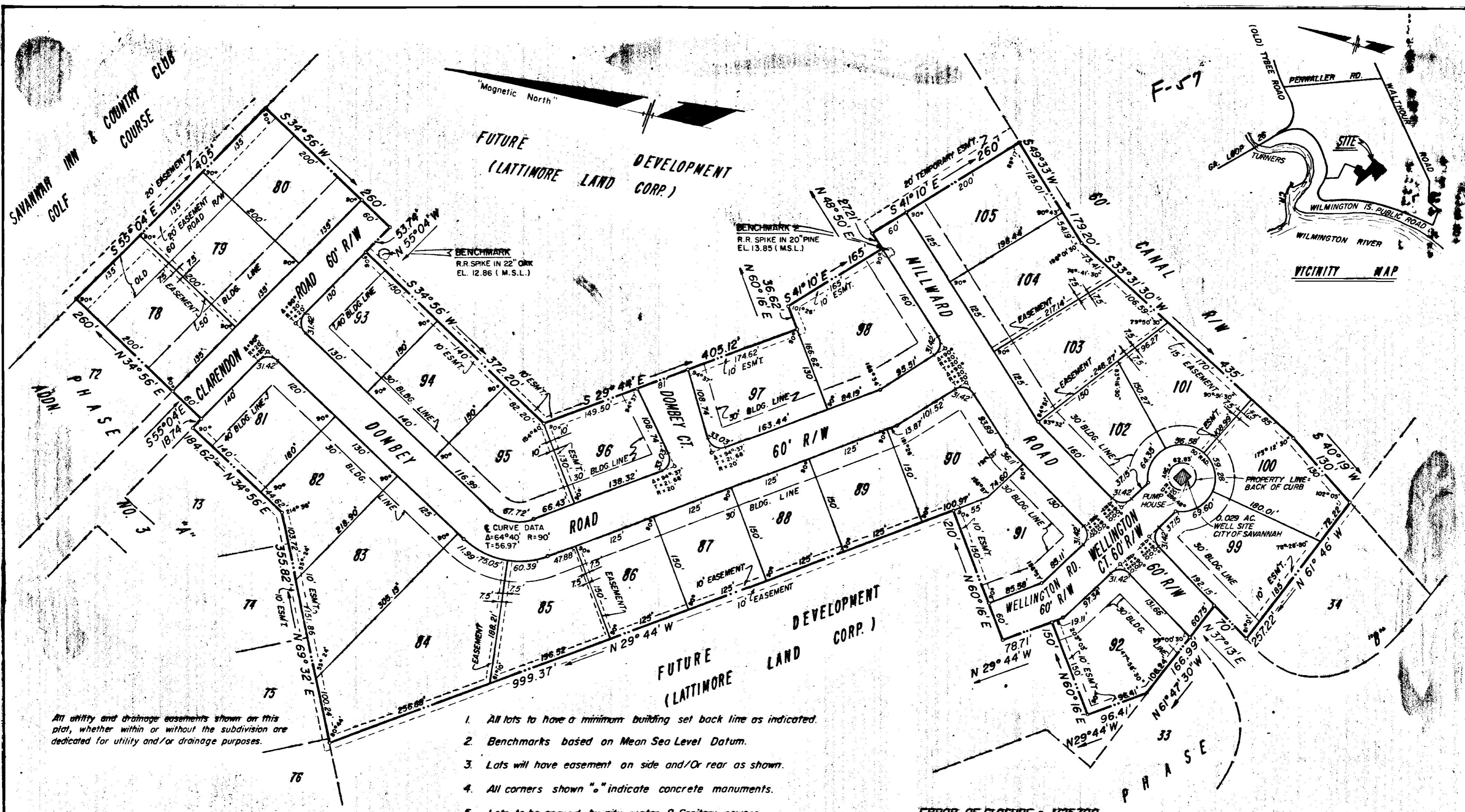


SAVANNAH INN & COUNTRY CLUB
GOLF COURSE

PHASE
NO. 3

Approved By Chatham County Engineer Lee Nel 1970
 County Engineer
 Approved For Chatham County Department of Public Health, Division
 Of Engineering & Sanitation Nov 12 1970
 Director Charles W. Lindsay
 Approved By Metropolitan Planning Commission Nov. 12 1970
 Secretary Joseph L. Camp
 Approved in Open-Court This 13th Day Of Nov 1970
James H. ... ccc
Ed. S. ... ccc
A. Scott ... ccc
James ... ccc
Walter ... ccc
P. ... ccc

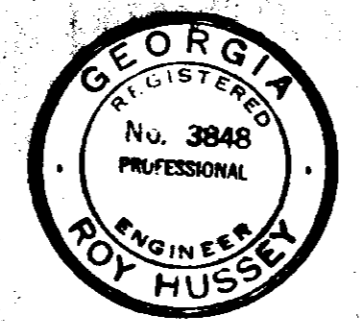
Magnetic North
 FUTURE DEVELOPMENT
 (LATTIMORE LAND CORP.)



All utility and drainage easements shown on this plot, whether within or without the subdivision are dedicated for utility and/or drainage purposes.

1. All lots to have a minimum building set back line as indicated.
2. Benchmarks based on Mean Sea Level Datum.
3. Lots will have easement on side and/or rear as shown.
4. All corners shown "o" indicate concrete manuments.
5. Lots to be served by city water & Sanitary sewers.
6. Streets in this subdivision shall be paved by the developer as required by Chatham County & shall have concrete curbs & gutters.
7. Street markers to be installed at all intersections.
8. I certify that this subdivision will drain as shown on the approved engineering drawings and that all angles, bearings, measurements of courses and distances and monument locations are correct as shown and have been proved by land survey.

In my opinion, this plat is a correct representation of the land platted and has been prepared in conformity with the minimum standards and requirements of law.



ROY HUSSEY
 GA. REG. L.S. NO. 1212
 GA. REG. P.E. NO. 3848

ERROR OF CLOSURE = 1/25,700
 TOTAL LOTS = 28 LOTS
 ACREAGE = 19.99 AC.
 ALL CURVE DATA BASED ON ARC DEFINITION

WILMINGTON PARK PHASE A - ADDITION NO. 4

A SUBDIVISION OF A PORTION OF THE WALTHOUR SUBDIVISION
 WILMINGTON ISLAND, FIFTH G.M. DISTRICT, CHATHAM COUNTY, GEORGIA

— for —
 LATTIMORE LAND CORP.

HUSSEY & GAY
 Consulting Engineers
 SAVANNAH, GEORGIA

Final Nov. 1970
 Date July 1968

Scale: 1" = 100'