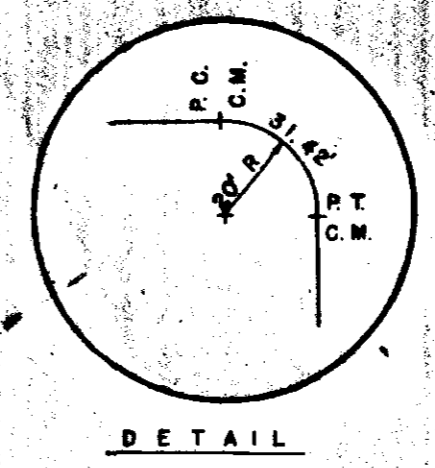
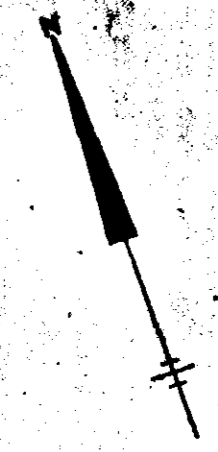
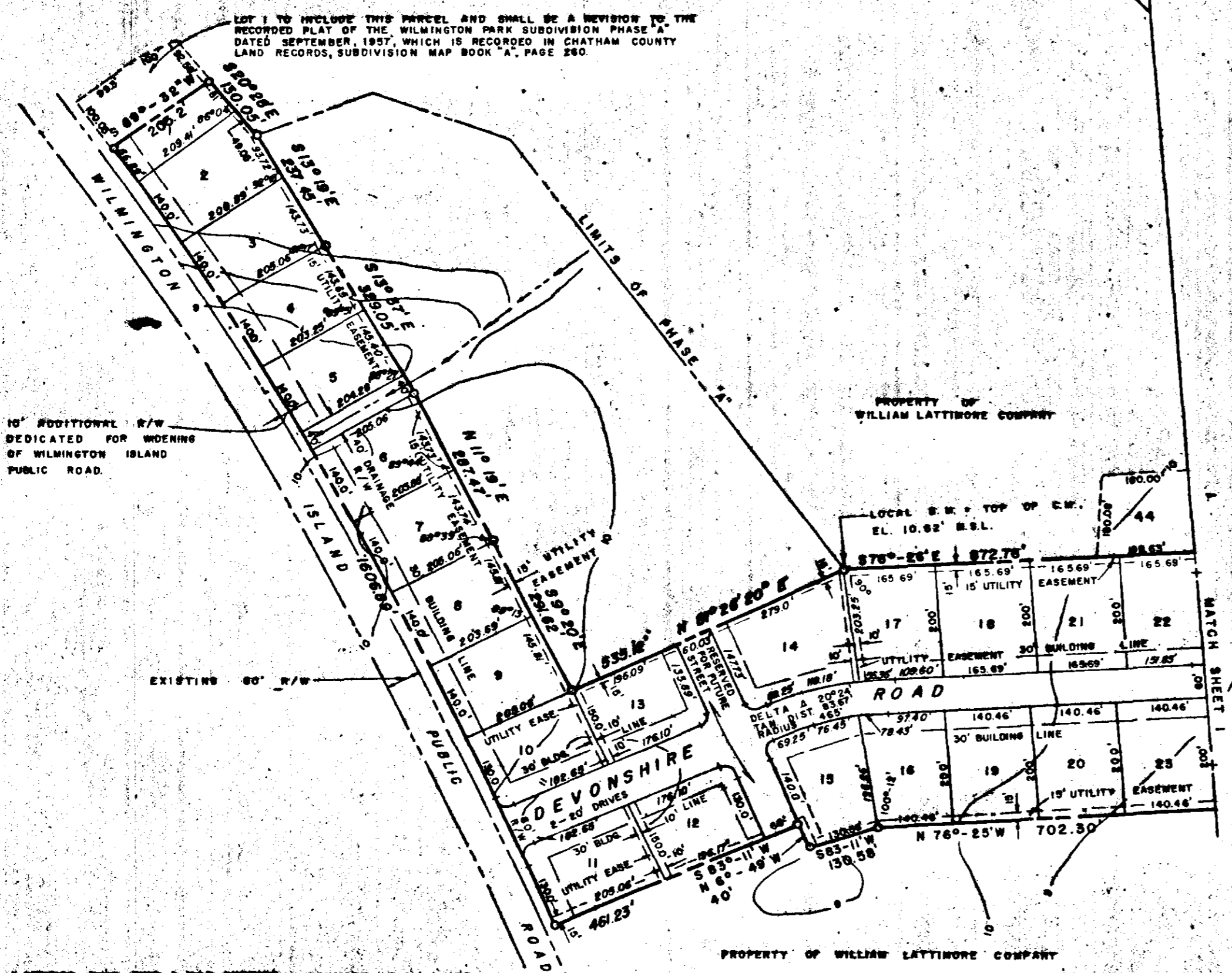


RECEIVED
RECORD
JAN 18 3 07 PM '59
WILLIAM D. SCOTT
CLERK S.C.C.G.A.



DETAIL



LOT 1 TO INCLUDE THIS PARCEL AND SHALL BE A REVISION TO THE RECORDED PLAT OF THE WILMINGTON PARK SUBDIVISION PHASE "A" DATED SEPTEMBER 1957 WHICH IS RECORDED IN CHATHAM COUNTY LAND RECORDS, SUBDIVISION MAP BOOK "A", PAGE 280.

10' ADDITIONAL R/W DEDICATED FOR WIDENING OF WILMINGTON ISLAND PUBLIC ROAD.

PROPERTY OF WILLIAM LATTIMORE COMPANY

PROPERTY OF WILLIAM LATTIMORE COMPANY

I CERTIFY THAT THIS MAP SHOWING A REVISION OF ALL LOTS DESIGNATED BY DIMENSIONS SHOWN BY SLANT LETTERING AND/OR NUMERALS, (A.S. 100.00'), AND I FURTHER CERTIFY THAT ALL DIMENSIONS SHOWN BY VERTICAL LETTERING AND/OR NUMERALS (A.S. 100.00'), IS IN ALL OTHER RESPECTS IDENTICAL, AS TO COURSES, LOT AND STREET LOCATIONS, EXCEPT FOR THE ADDITION OF LOTS 20 AND 23, AS THAT OF WILMINGTON PARK, PHASE "A", RECORDED IN THE OFFICE OF THE CLERK OF THE SUPERIOR COURT OF CHATHAM COUNTY, GEORGIA, SUBDIVISION MAP BOOK "A", PAGES 281 AND 281 A.

WILMINGTON PARK

PHASE B

(SHEET 2 OF 2)

CHATHAM COUNTY GEORGIA

DEVELOPER

WILLIAM LATTIMORE CO.
SAVANNAH, GEORGIA

SCALE: 1" = 200'

DATE: DECEMBER, 1959

NOTE:
DIMENSIONS ON THE FRONT AND SIDE PROPERTY LINES OF CORNER LOTS ARE FROM THE P.C. FOR THE LENGTH OF CURVE OF THE 20' RADIUS ON CORNERS SEE DETAIL.

Errett F. Gunn
ERRETT F. GUNN
CONSULTING ENGINEER, INC.
GEORGIA REGISTRATION NO. 1097
SAVANNAH GEORGIA

CHATHAM COUNTY DOES NOT ACCEPT THE DEDICATION OF THE WAYS OR ASSUME ANY OBLIGATION WITH REFERENCE TO THEM NOR SANCTION THEIR USE AS ROADS OR STREETS BY THE PUBLIC BY APPROVING THIS PLAN NOR DOES THE COUNTY ACCEPT RESPONSIBILITY OR ASSUME ANY OBLIGATION WITH RESPECT TO SURFACE DRAINAGE THAT IS NOT PROVIDED FOR BY THE DITCHES OR CANALS NOW EXISTING.

APPROVED BY THE CHATHAM COUNTY
SANITARY ENGINEER 14 January 1959
Mark R. Starbuck

APPROVED BY THE CHATHAM COUNTY
ENGINEER 13 Jan 1959
Joseph A. Logan

APPROVED BY THE METROPOLITAN
PLANNING COMMISSION Jan 15 1959
Mr. Lippert
CHAIRMAN

APPROVED BY COMMISSIONERS CHATHAM COUNTY, GEORGIA
APPROVED IN OPEN COURT THIS 15th DAY OF Jan 1959
W. H. Gator
John W. Solomon
John W. Middleton
Edgar C. Dikering
Tom W. Hanes
W. S. Dauter

- 1. ALL LOTS SHALL HAVE A MINIMUM BUILDING SET BACK OF 30' FROM THE STREET RIGHT OF WAY PROPERTY LINE
- 2. ALL CONTOURS ARE BASED ON MEAN SEA LEVEL.
- 3. ALL STREET PAVING IS 26' WIDE. FACE OF CURB TO FACE OF CURB EXCEPT AS SHOWN.
- 4. ALL STREET RIGHT OF WAY WIDTHS ARE 60' EXCEPT AS SHOWN.
- 5. ALL PROPERTY CORNERS AT STREET INTERSECTIONS HAVE 20' RADIUS.