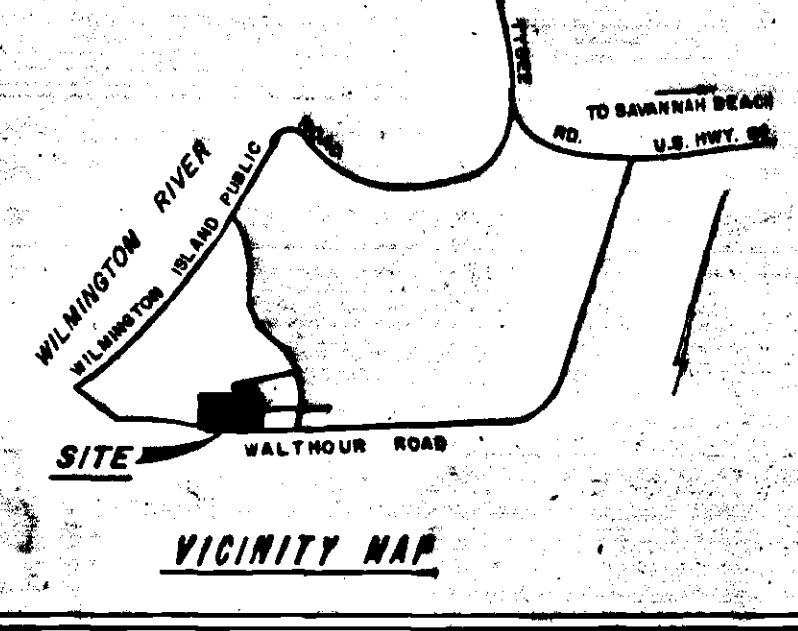
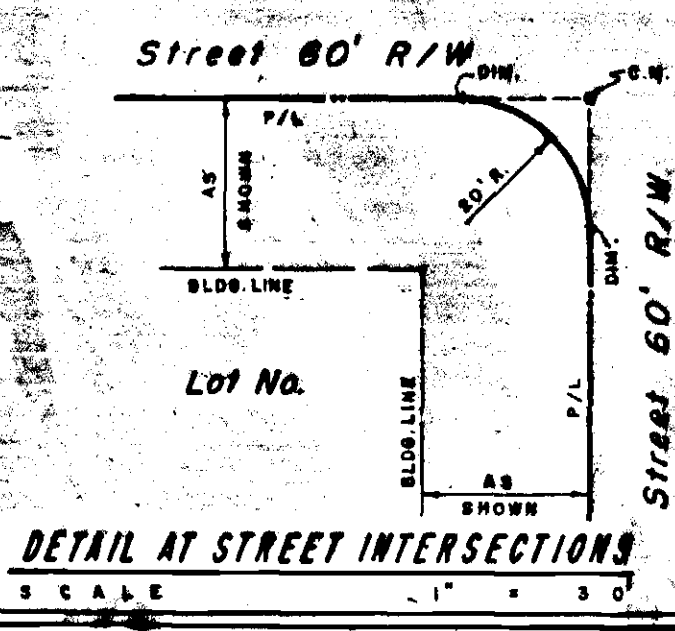


Approved By Chatham County Engineer Joseph A. Logan 4 Feb 1965
 COUNTY ENGINEER C-39
 Approved For Chatham County Department Of Public Health, Division
 Of Engineering & Sanitation M. R. Sullivan 4 Feb 1965
 DIRECTOR
 Approved By Metropolitan Planning Commission S. L. ... 5 Feb 1965
 SECRETARY
 Approved In Open Court This 5 Day Of Feb 1965
W. L. ... M. J. ...
... ...

Chatham County does not accept the dedication of the ways or assume any obligation with reference to them nor invite or sanction their use as roads or streets by the public by approving this plan, nor does the County accept responsibility or assume any obligation with respect to surface drainage that is not provided for by canals & ditches now existing.

- GENERAL NOTES:**
1. All lots to have a minimum building set back line as indicated.
 2. Lots will have easement on side and/or rear as shown.
 3. All corners shown "i" indicate concrete monuments.
 4. Subdivision to be served by water borne sanitary sewerage system and public water supply distribution system.
 5. Streets in this subdivision shall be paved by the developer as required by Chatham County & shall have concrete curbs & gutters.
 6. Street markers to be installed at all intersections.
 7. I certify that this subdivision will drain as shown on the approved engineering drawings and that all angles, bearings, measurements of courses and distances and monument locations are correct as shown and have been proved by land survey.
- In my opinion, this plat is a correct representation of the land platted and has been prepared in conformity with the minimum standards and requirements of law

Roy Hussey
 Roy Hussey
 No. 1212
 LAND SURVEYOR
 ROY HUSSEY
 GEORGIA REGISTERED
 No. 3348
 PROFESSIONAL
 ENGINEER
 ROY HUSSEY



Since The Subdivision Property And The Adjacent Properties Are Owned By The Subdivider, All Utility Or Drainage Easements Shown On This Plat, Whether Within Or Without The Subdivision, Are Dedicated For Utility And/Or Drainage Purposes.

Error of closure: 1/285,000
 Total lots: 93
 Total acres: 37.98
 All elevations based on Mean Sea Level datum.
 All curve data based on Arc Definition.

WILMINGTON PARK PHASE B ADDITION NO. 3

A SUBDIVISION OF A PORTION OF THE WALTHOUR SUB'D. WILMINGTON ISLAND, CHATHAM COUNTY, GEORGIA

for WILMINGTON PARK LIMITED

Scale: 1"=100' Date: Nov., 1964

HUSSEY & GAY
 Consulting Engineers
 SAVANNAH, GEORGIA