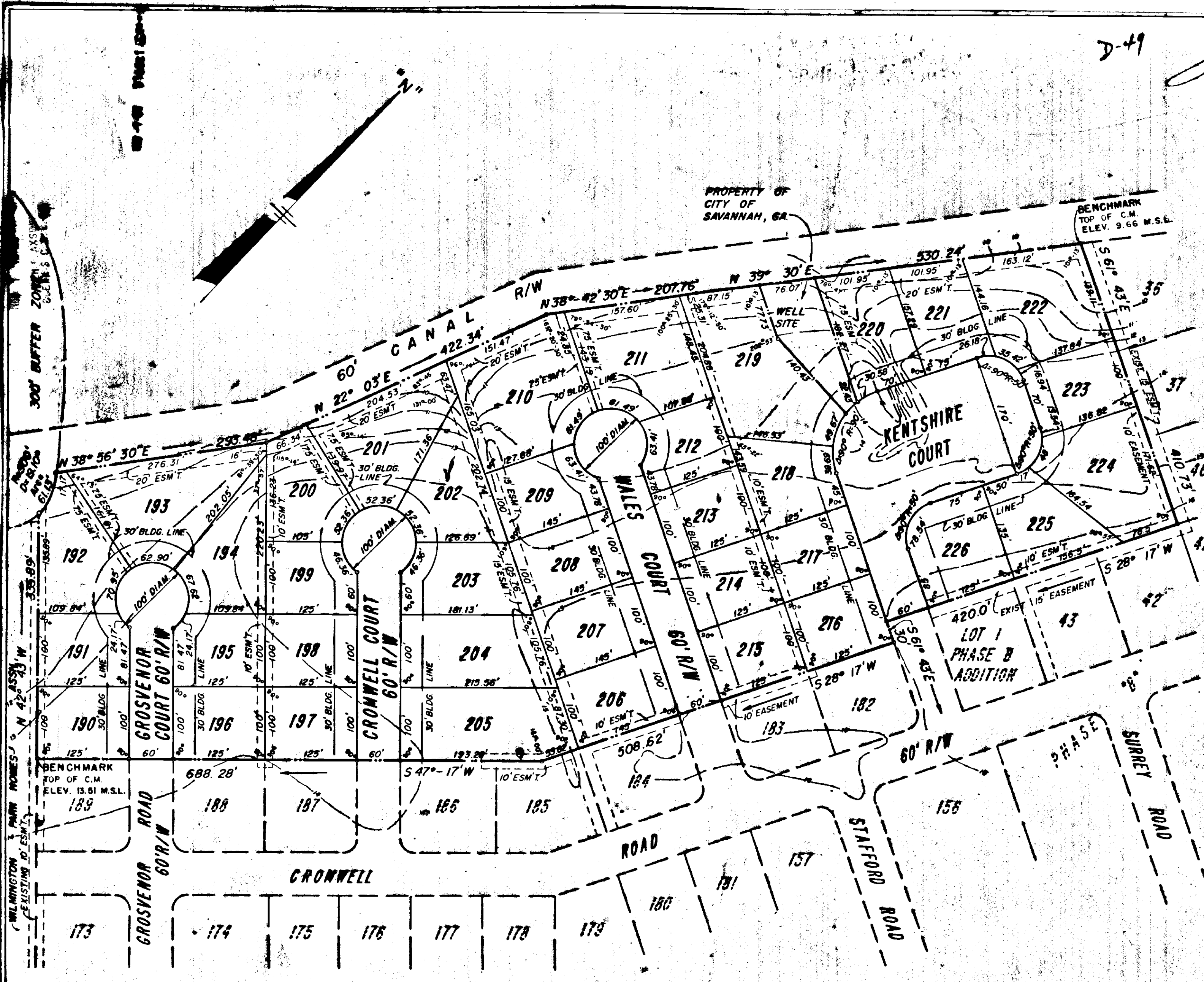


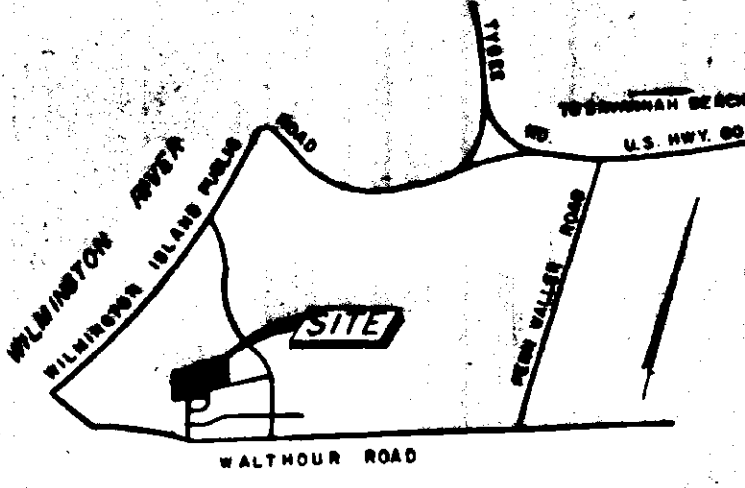
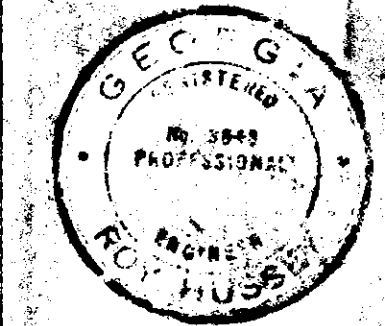
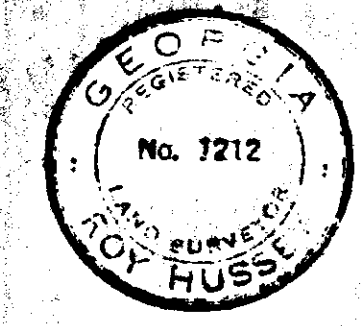
D-49

Approved By Chatham County Engineer Oct. 27 1967
Joseph A. Logan
 COUNTY ENGINEER
 Approved For Chatham County Department Of Public Health, Division
 Of Engineering & Sanitation Oct. 27 1967
Charles W. Lindsey
 DIRECTOR
 Approved By Metropolitan Planning Commission Oct. 26 1967
W. Clayton Hill
 SECRETARY
 Approved in Open Court This 27th Day Of OCTOBER 1967
J. H. Law *W. M. Seal*
John T. Longaker
J. T. Kearney
P. E. Pittman



- GENERAL NOTES:**
1. All lots to have a minimum building set back line as indicated.
 2. Lots will have easement on side and/or rear as shown.
 3. All corners shown "o" indicate concrete monuments.
 4. Subdivision to be served by sanitary sewerage system and water distribution system of the City of Savannah.
 5. Streets in this subdivision shall be paved by the developer as required by Chatham County & shall have concrete curbs & gutters.
 6. Street markers to be installed at all intersections.
 7. I certify that this subdivision will drain as shown on the approved engineering drawings and that all angles, bearings, measurements of courses and distances and monument locations are correct as shown and have been proved by land survey.
- In my opinion, this plat is a correct representation of the land platted and has been prepared in conformity with the minimum standards and requirements of law.

Roy Hussey
 Roy Hussey
 GA. REG. L.S. NO. 1212
 GA. REG. P.E. NO. 10045



Since The Subdivision Property And The Adjacent Properties Are Owned By The Subdivider, All Utility Or Drainage Easements Shown On This Plat, Whether Within Or Without The Subdivision, Are Dedicated For Utility And/Or Drainage Purposes.

Error of closure: 1/82700
 Total lots: 37 lots
 Total acres: 16.99 Acres
 All elevations based on Mean Sea Level datum.
 All curve data based on Arc Definition.

WILMINGTON PARK PHASE B - ADDITION NO. 4

A SUBDIVISION OF A PORTION OF THE WALTHOUR SUB'D
 WILMINGTON ISLAND, CHATHAM COUNTY, GEORGIA

Scale: 1"=100' Date: Aug, 1967

HUSSEY & GAY
 Consulting Engineers
 SAVANNAH, GEORGIA