

GENERAL NOTES

1. All lots to have a minimum building setback line as shown.
2. All elevations based on Mean Sea Level Datum.
3. Lots will have easement on side and or rear as shown.
4. All corners shown "•" indicate concrete monuments.
5. Lots to be served by city water & sanitary sewers.
6. Streets in this subdivision shall be paved by the developer.
7. Street markers to be installed at all intersections.

I certify that this subdivision will drain as shown on the approved engineering drawings and that all angles, bearings measurements of courses and distances and monument locations are correct as shown and have been proved by land survey.

In my opinion, this plot is a correct representation of the land platted and has been prepared in conformity with the minimum standards and requirements of law.

Approved By Chatham County Engineer 11 July 1972

*Joseph A. Logan*  
County Engineer

Approved For Chatham County Department Of Public Health Division Of Engineering & Sanitation 7 July 1972

*Mark R. Harrison*  
Director

Approved By Metropolitan Planning Commission July 16 1972

*W. F. S. S. S.*  
Secretary, Dept.

Approved in Open Court This 21<sup>st</sup> Day Of July 1972

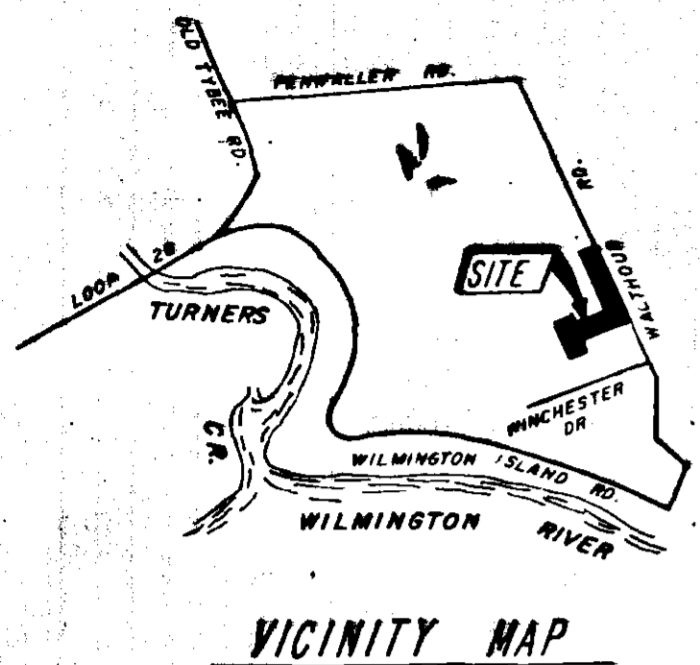
*Robert L. ...*  
*Ed ...*  
*...*

Chatham County Does Not Accept The Dedication Of The Ways Or Assume Any Obligation With Reference To Them Nor Invite Or Sanction Their Use As Roads Or Streets By The Public By Approving This Plan, Nor Does The County Accept Responsibility Or Assume Any Obligation With Respect To Surface Drainage That Is Not Provided For By Canals & Ditches Now Existing.

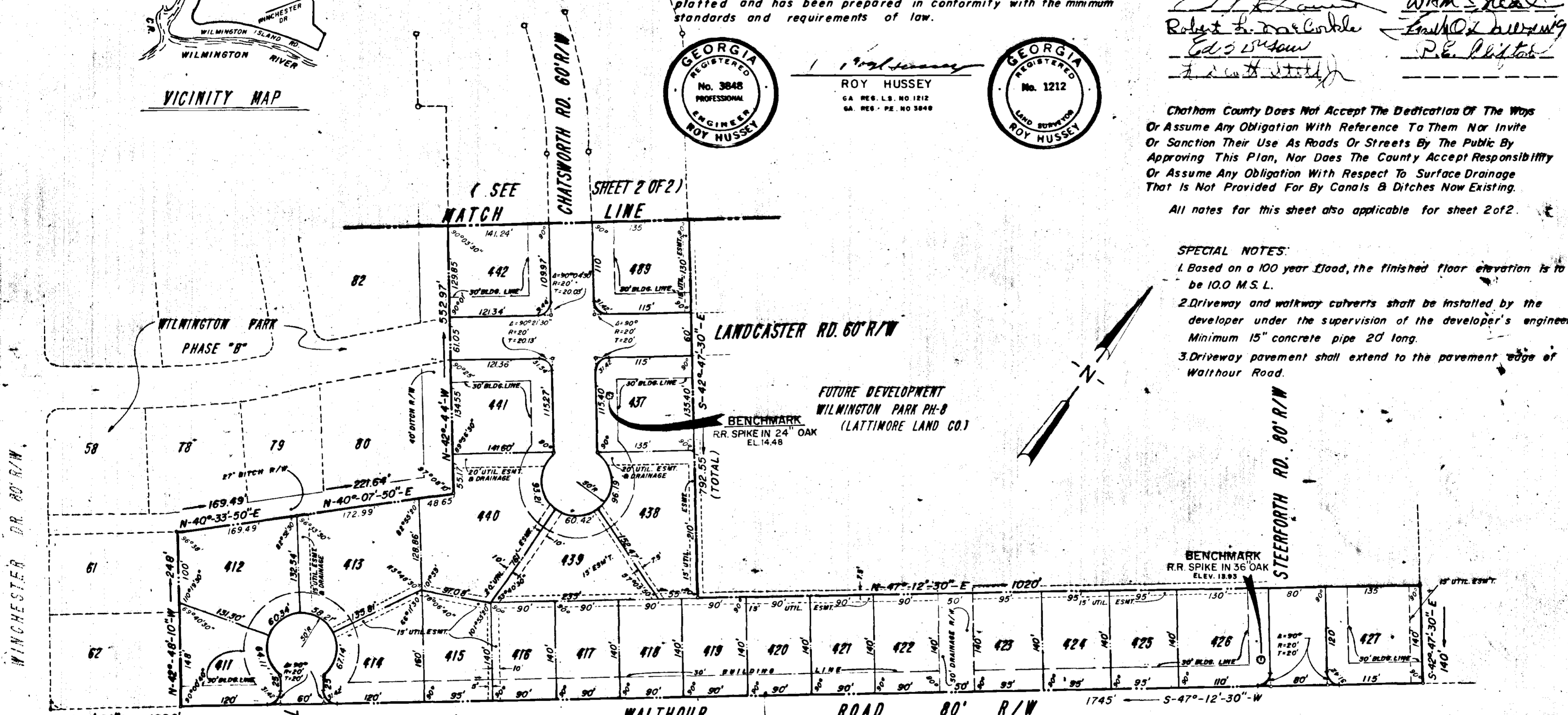
All notes for this sheet also applicable for sheet 2 of 2.

SPECIAL NOTES:

1. Based on a 100 year flood, the finished floor elevation is to be 10.0 M.S.L.
2. Driveway and walkway culverts shall be installed by the developer under the supervision of the developer's engineer. Minimum 15" concrete pipe 20' long.
3. Driveway pavement shall extend to the pavement edge of Walthour Road.



ROY HUSSEY  
GA REG. L.S. NO 1212  
GA. REG. P.E. NO 3848



ERROR OF CLOSURE: 1/74,575  
TOTAL LOTS: 24  
ACREAGE: 24.27

Note:  
All easements shown are intended to be used for the installation of storm drainage features, power, telephone, gas and sewer lines as necessary to serve the subdivision.

HUSSEY, GAY & BELL  
Consulting Engineers  
SAVANNAH, GEORGIA

WILMINGTON PARK PHASE "B"  
PART ONE  
BEING A SUBDIVISION OF A PORTION OF THE  
"CARTER TRACT" WALTHOUR SUBDIVISION  
WILMINGTON ISLAND, FIFTH G.M. DISTRICT, CHATHAM COUNTY, GA.  
FOR  
LATTIMORE LAND CORP.