

J-19

Approved By Chatham County Engineer Dec. 19, 1973

Thomas A. Smith, Jr.  
County Engineer

Approved For Chatham County Department Of Public Health Division  
Of Engineering & Sanitation AUG 23 1973

Charles W. Sinderup  
Director

Approved By Metropolitan Planning Commission DEC. 19, 1973

Hawaii Bell  
Secretary / or / Deputy Secretary

Approved In Open Court This 21 Day Of DECEMBER 1973

John Coleman  
Chairman, County Commission

ATTEST  
[Signature]  
Clerk

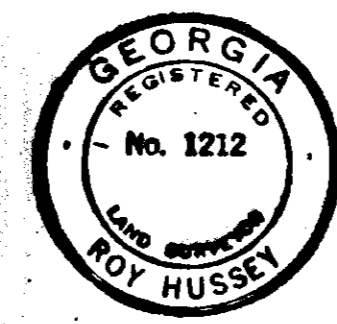
All rights-of-way shown are hereby dedicated for public use.

GENERAL NOTES:

1. All lots to have a minimum building set back line as indicated.
2. Lots will have easement on side and/or rear as shown.
3. All corners shown "C" indicate concrete monuments.
4. All elevations based on Mean Sea Level Datum.
5. Finished floor elevation of all habitable structures shall be a minimum of 13.0 feet Mean Sea Level in order to comply with the 100 year flood plain.
6. Street markers to be placed at all street intersections.
7. Streets in this subdivision shall be paved by the developer as required by Chatham County and shall have concrete curbs and gutters.
8. Sanitary sewer and water to be connected to existing City Of Savannah systems.
9. All easements shown are intended to be used for the installation of storm drainage features, power, telephone, gas, sewer lines as necessary to serve the subdivision.
10. Provide concrete monument at all intersections of right-of-way lines.

I certify that this subdivision will conform to the approved engineering drawings and that all angles, bearings, measurements of courses and distances and monument locations are correct as shown and have been proved by land survey.

In my opinion, this is a correct representation of the land plotted and has been prepared in conformity with the minimum standards and requirements of law.



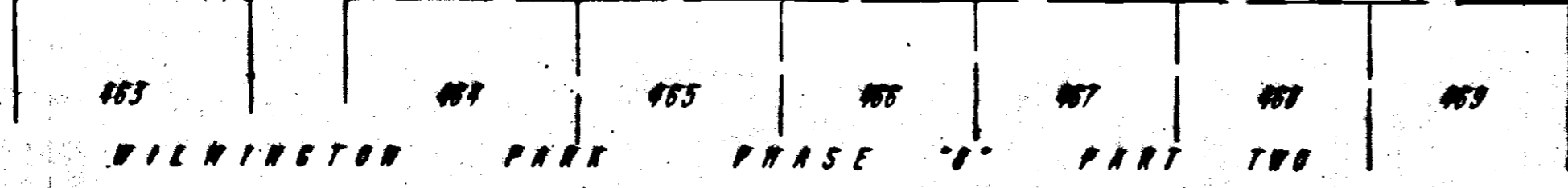
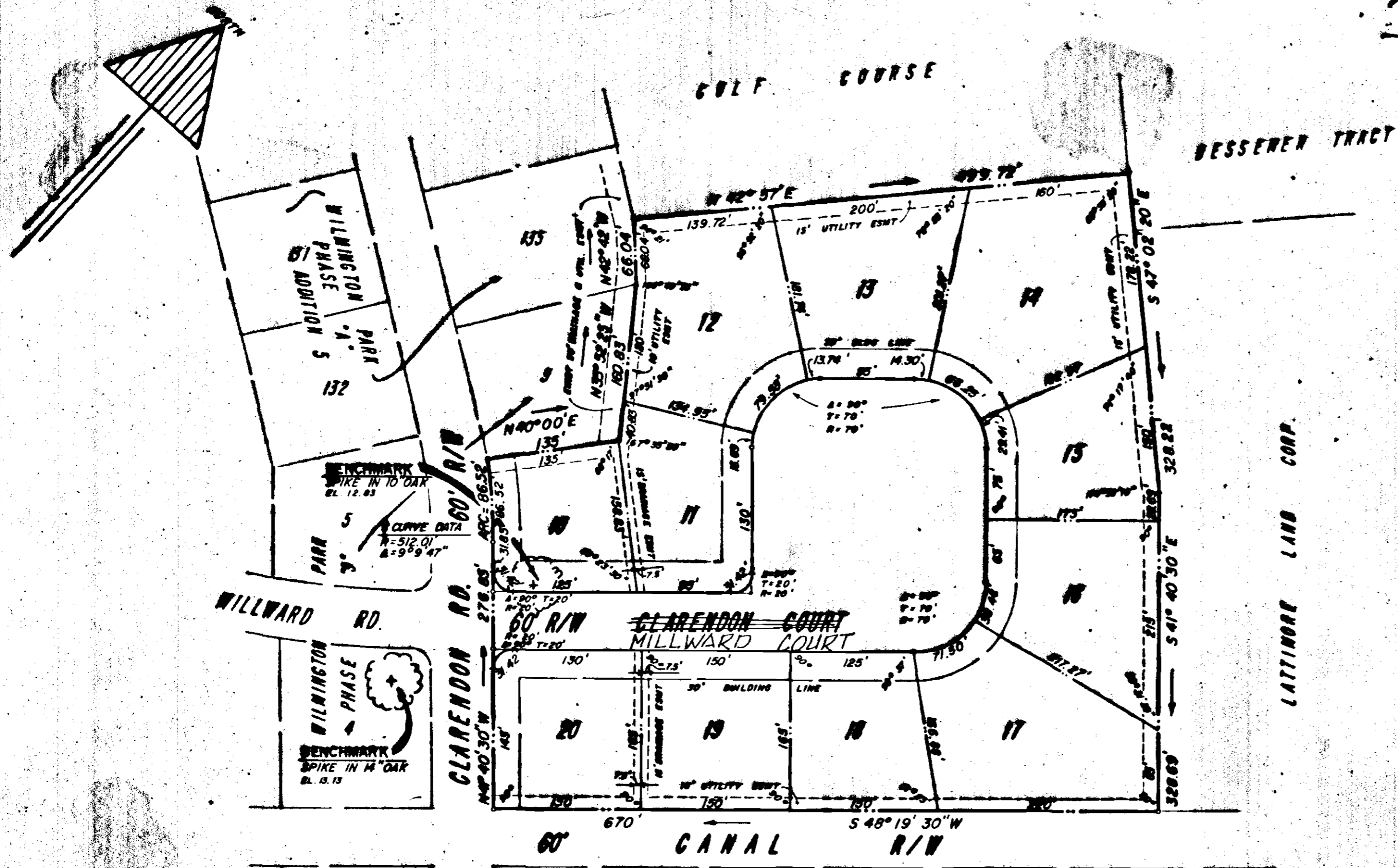
Roy Hussey  
Roy Hussey  
GA. REG. L.S. NO. 1212  
GA. REG. P.E. NO. 3048



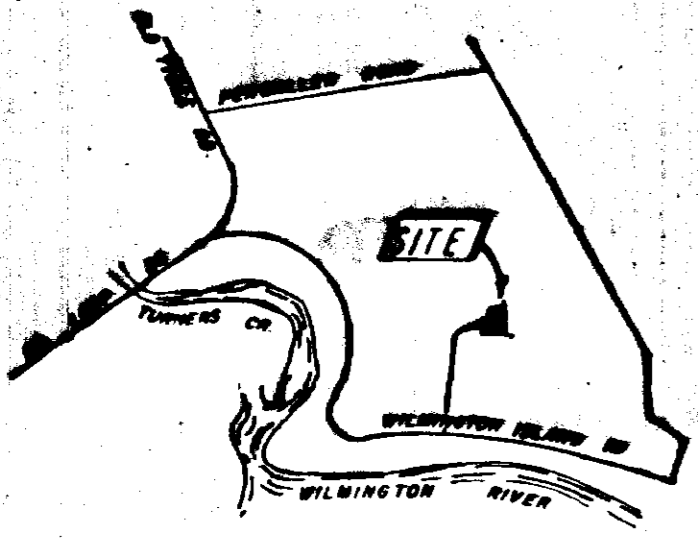
# PHASE II WILMINGTON PARK SUBDIVISION

A SUBDIVISION OF A PORTION OF THE WALTHOUR SUB'D  
WILMINGTON ISLAND, CHATHAM COUNTY, GEORGIA

For  
WILMINGTON PARK, LIMITED



Error Of Closure: 1/83,756  
Total Acreage: 8.82 Acres  
Total No. Of Lots: 11



LOCATION MAP

**HUSSEY, GAY & BELL**  
Consulting Engineers  
SAVANNAH, GEORGIA

Scale: 1" = 100'

D.W.S. \_\_\_\_\_

Date: 10/19/73